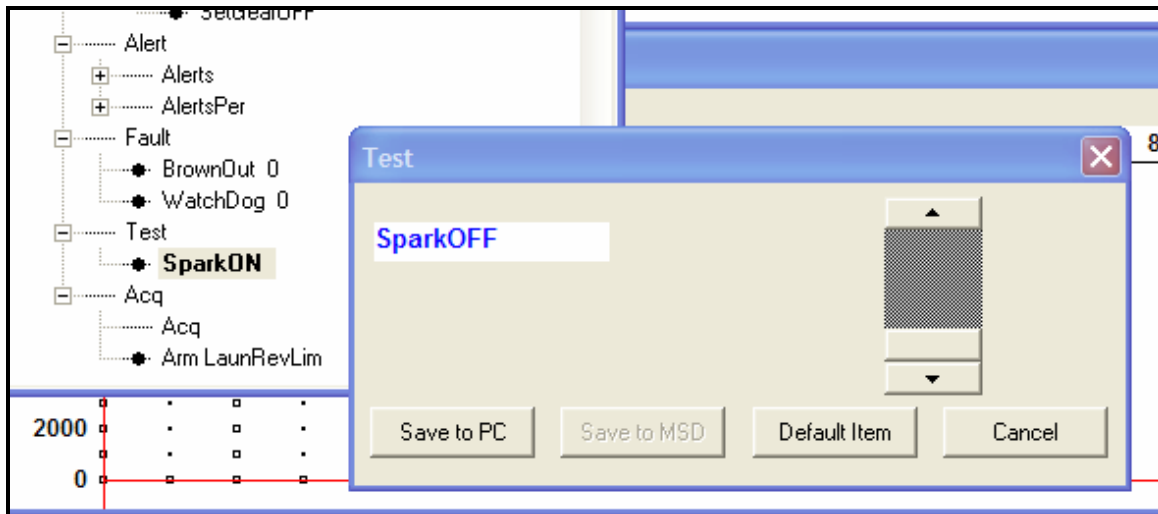


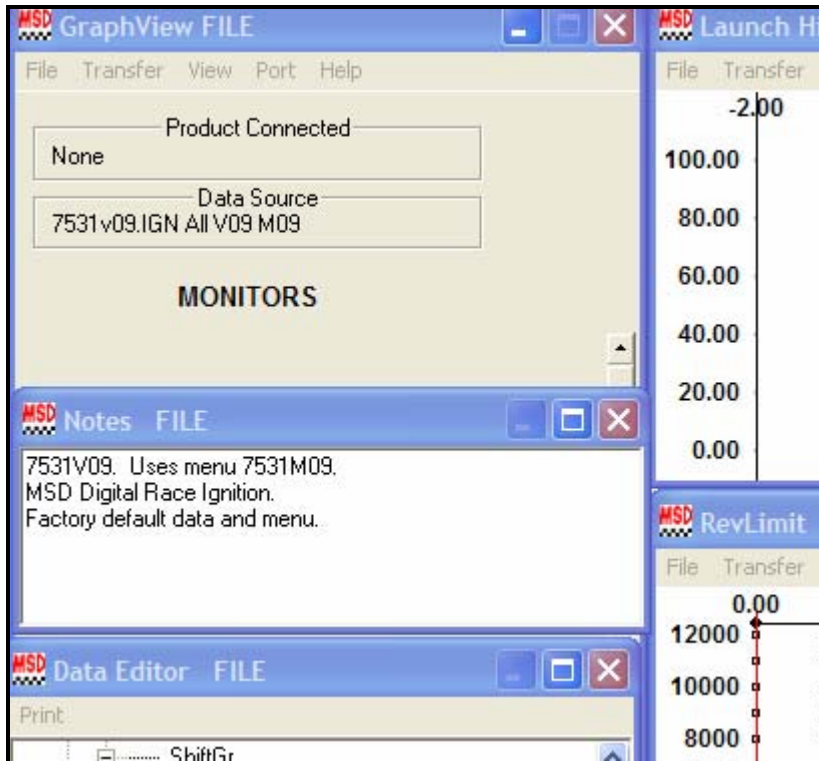
Addendum to 7531s connecting to Pro Mag systems

This addendum will apply to all our Pro Mag system 12, 20 and 44 Amp systems.

Due to different version units of the 7531s, units starting with version 7531v09.IGN will require the use of the Heavy Red Power wire to be connected to Battery + 12Volts. And a menu item at the bottom of the Data Editor listed “Test” will need to be switched to the “Spark Off” position.



The “Test” section in the Data Editor is only available in version 09. and later units. Your version can be identified in the Data Source location.



Connections

As the wiring diagram shows the “Gray” wire connecting to the “Violet” wire on the two pin connector. Earlier version units that don’t have a “Gray” wire on the 12 pin connector can connect to the “Tach” output connector.

